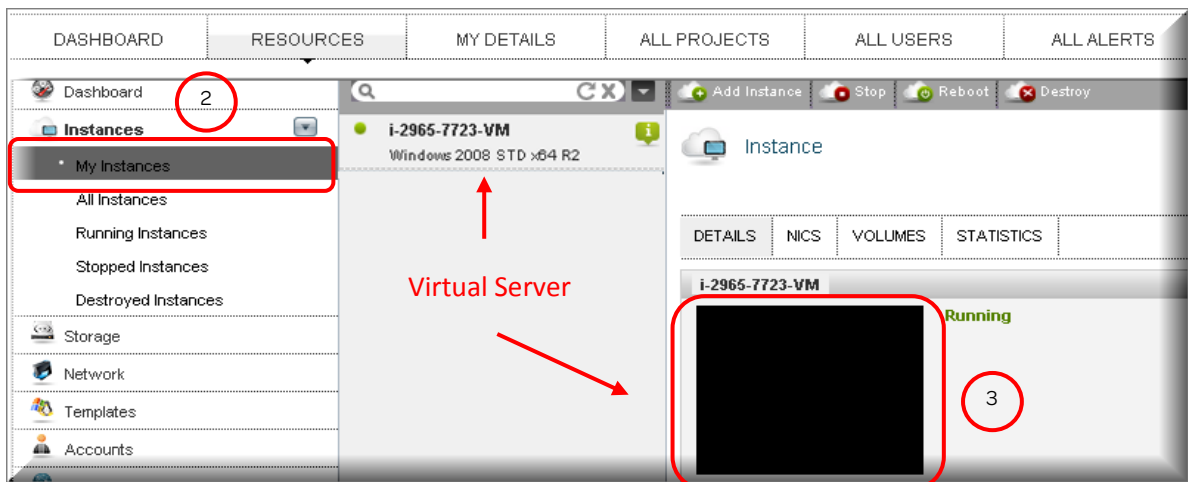
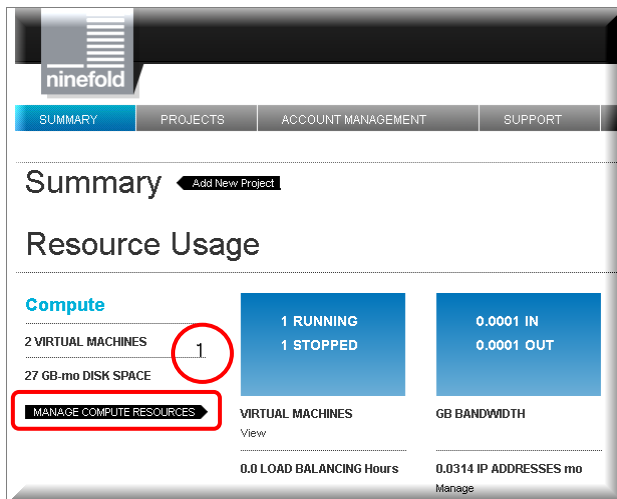




Log into a Virtual Server

New Virtual servers are not connected to the Internet by default. This is a security feature to ensure your virtual server remains secure from the outside world until you log in, change your administrator password and configure your virtual server security policy.

1. Access to your server is via the Summary tab of our portals home page, click on Manage Compute Resources (1). On the left dashboard menu click on Instances, My Instances (2) and then click on your virtual server to see the server image on the right (3).



2. You will be provided with a secure internal console which enables you to connect to your virtual machine. For security purposes you will need to change the default password.

NOTE: You may be prompted for the default password, this can be found by going into our Supports [Ninefold Templates](#) and selecting the template you installed.

3. The server will run through its setup and once complete you are ready to start using your new Virtual server instance.

NOTE: The secure internal console is recommended for virtual machine initial setup only. This would include:

- First logon / password reset
- RDP / SSH configuration

For console access to virtual machines with full functionality we recommend that you use RDP/SSH clients connecting directly to the virtual server (via the assigned static IP/NAT). Contact support on 1300 045 614 for more information.